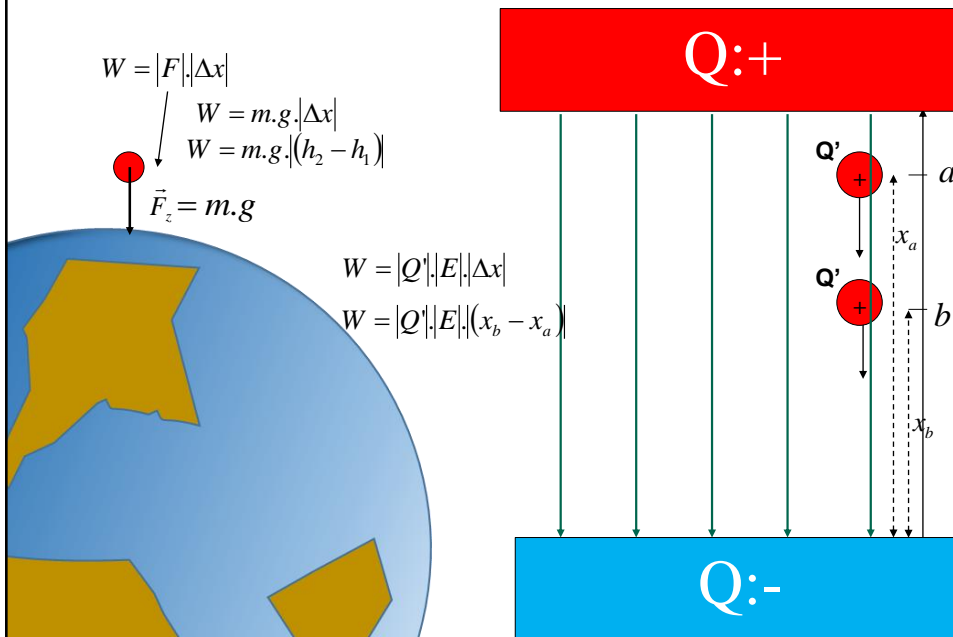
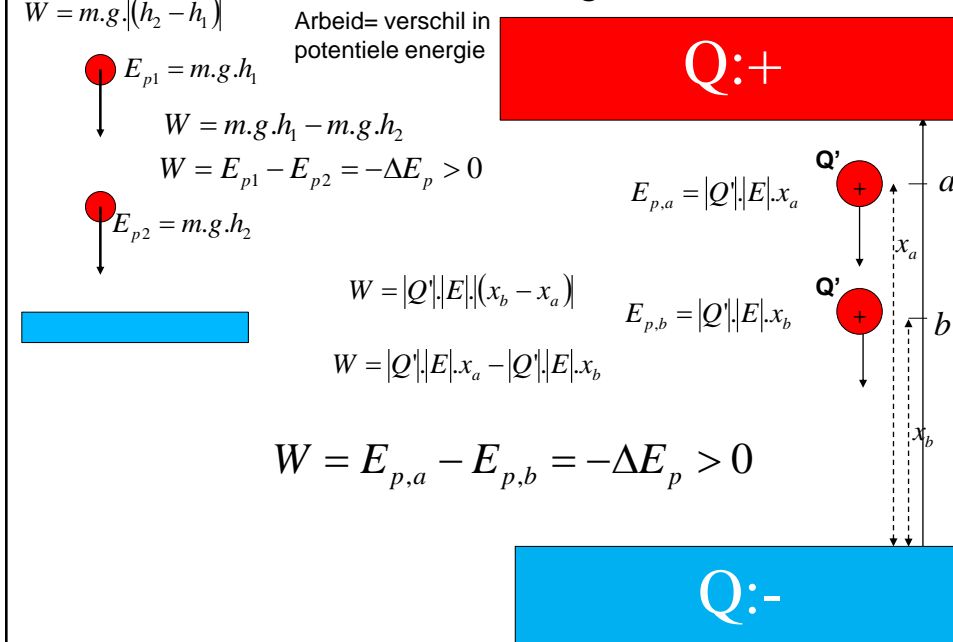


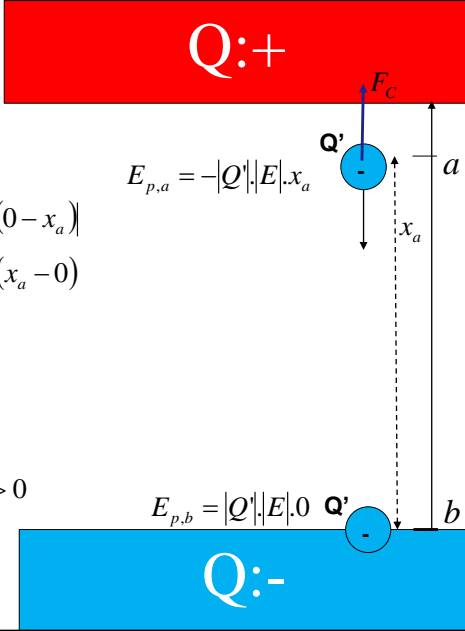
Arbeid in een homogeen elektrisch veld



Potentiele energie



Potentiele energie



$$W = E_{p,a} - 0$$

$$W = -(E_{p,0} - E_{p,a})$$

$$W = -\Delta E_p$$

$$W = -|Q'| \cdot |E| \cdot (0 - x_a)$$

$$W = -|Q'| \cdot |E| \cdot (x_a - 0)$$

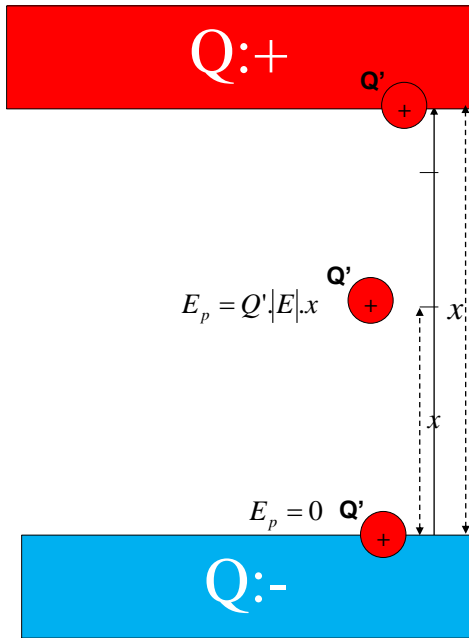
$$E_{p,a} = -|Q'| \cdot |E| \cdot x_a$$

$$E_{p,b} = |Q'| \cdot |E| \cdot 0$$

$$Q' < 0 \rightarrow W < 0 \rightarrow -\Delta E_p < 0 \rightarrow \Delta E_p > 0$$

$$E_p = Q \cdot |E| \cdot x$$

Potentiele energie



$$E_p = Q' \cdot |E| \cdot d$$

$$E_p = Q' \cdot |E| \cdot x$$

$$E_p = 0$$

$$\Delta E_p = E_{p,0} - E_{p,d}$$

$$\Delta E_p = 0 - Q' \cdot |E| \cdot d$$

$$\Delta E_k = Q' \cdot |E| \cdot d$$

Potentiele energie

